

The definitive guide to London dining & events

A BEYOND EVENT AT CENTURY

*"With an interior of rustic, wooden and chicly weathered rooms, Century rises up like Blyton's Faraway Tree."*61-63 Shaftesbury Avenue, London W1D 6LQ | 020 7534 3080 | [More information](#)

We're not headed for The Ark so why do girls go to the loo in twos? It remains a mystery to men but a vital practice for women – one that I always assumed was merely to allow for detailed discussion away from prying, male ears (it's believed that Margaret Thatcher and The Queen had some of their most profound conversations over the hand-drier). But when – earlier this week – I found myself in a room with nearly 200 women and very few men, I noted the girls still went in twos. And so it seems I too am at a loss as to why we do it. The few men present appeared so flummoxed by the behaviour of women en masse, they even seemed unsure of how to behave (though, not wholly hating the ratio of the sexes, it's perhaps safe to say they were stuck between a rock and a hard place). [Read review](#)

Waiting for the weekend,

Lady Blonde X[See more reviews](#)

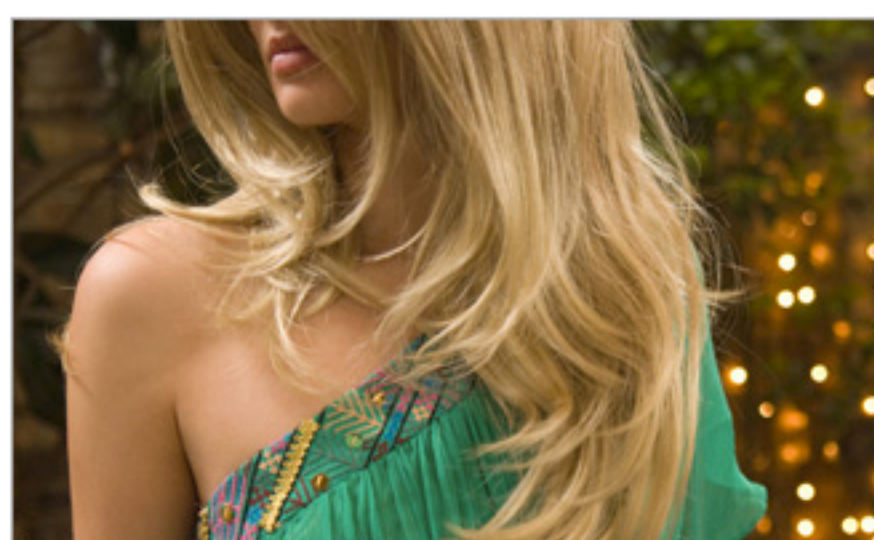
WHAT ROCKED »

For those that were looking to entertain clients with a focus on ROI, and for those who were offering a motivational treat for staff, BEYOND and Century delivered a winning combination.

WHAT SHOCKED »

A woman wiped out and spilt her drink down my friend's dress; it was funny but the dry cleaning bill won't be.

GET THE LOOK »

[Get the Look](#)

GET THE LOOK

A BEYOND event at Century

As inspired by the SATC girls, dresses that float off one shoulder achieve ultimate elegance at all times of the day.

[BROWSE ITEMS](#)

UPCOMING EVENT »



WIMBLEDON

The sun is out, let's hope it stays. Book your tickets now. [View Diary](#)

FEATURED DEALS »

[See all](#)

CENTURY

Enjoy discounted Room Hire at Century on Shaftesbury Avenue. [View listing](#)

DIARY »

[Whats on in London](#)

THE DIARY

Summer Season 2010 is here...

From Wimbledon to Ascot, Lord's to Henley, Lady Blonde (in conjunction with Keith Prowse) can see to all hospitality needs.

[BROWSE DIARY](#)

BECOME A MEMBER »

Membership of Lady Blonde is designed exclusively for the most discerning but fun-loving Londoners. Perks include:

- **Free gifts** when you join.
- **Exclusive deals** available at all the best venues, and with all the best companies. **And more...**

[READ MORE](#)

WANT TO KEEP YOUR FRIENDS IN THE LOOP?

[SEND TO A FRIEND](#)